



EZ Pads Assembly and Installation

IMPORTANT! - Please read entire instructions before assembly.

Follow these easy instructions to properly assemble and install your EZ Pads.

Tools Needed for Installation:

- Shovel
- Level
- 2x4 to assist in leveling dirt sand or gravel.
- #2 Phillips head screwdriver or cordless drill and bit.



What You Will Receive

8x8: One Box Contains:

- (112 lbs.)
- (4) 48" x 48" x 2" Modules
- (8) Black EZ Pad connectors
- (16) #3 Phillips Pan head size 14, 1-inch screws



8x12: Two Boxes & One Envelope:

- (112 lbs., 56 lbs., 2 lbs.)
- (6) 48" x 48" x 2" Modules
- (14) Black EZ Pad connectors
- (32) #3 Phillips Pan head size 14, 1-inch screws



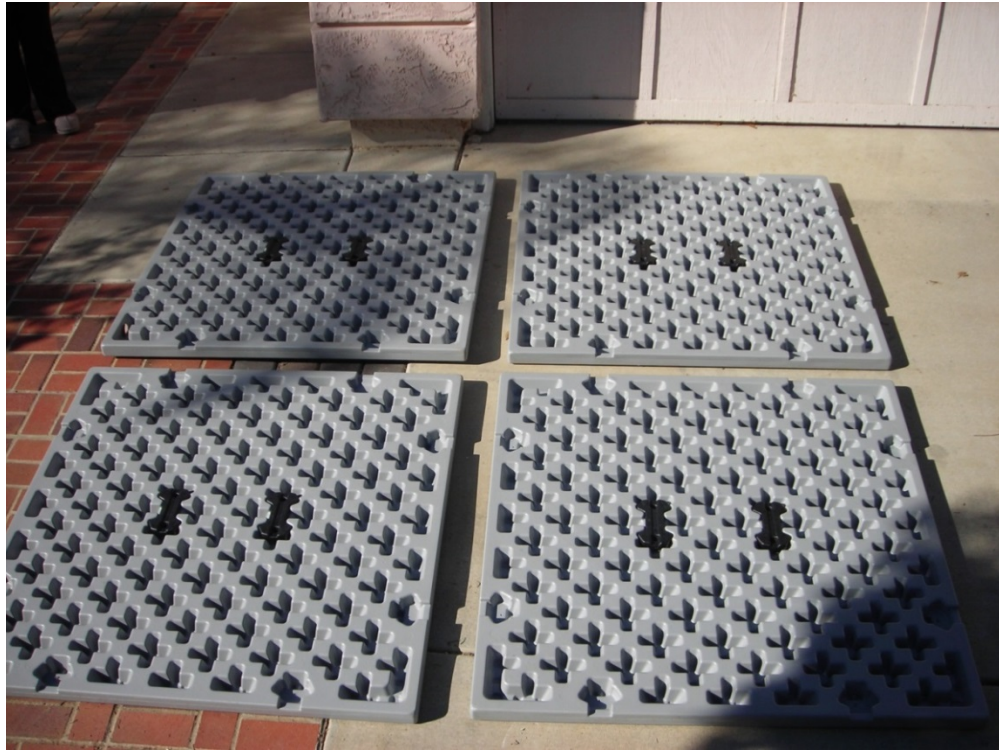
8x16: Two Boxes & One Envelope:

- (112 lbs., 112 lbs., 2 lbs.)
- (8) 48" x 48" x 2" Modules
- (20) Black EZ Pad connectors
- (48) #3 Phillips Pan head size 14, 1-inch screws

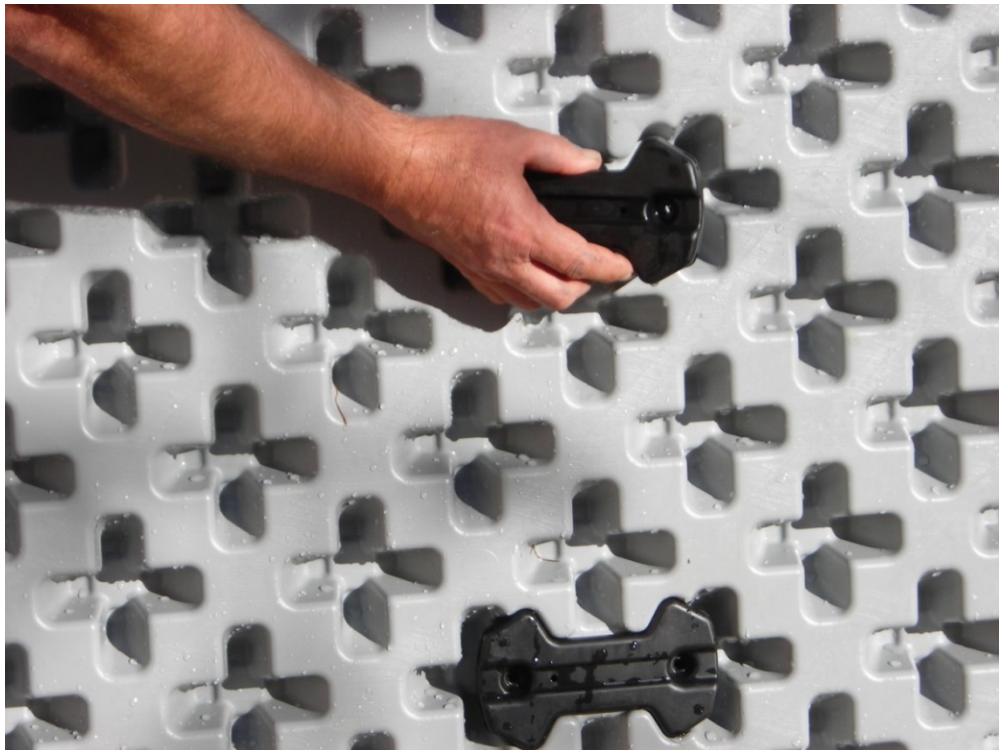


EZ Pads Assembly

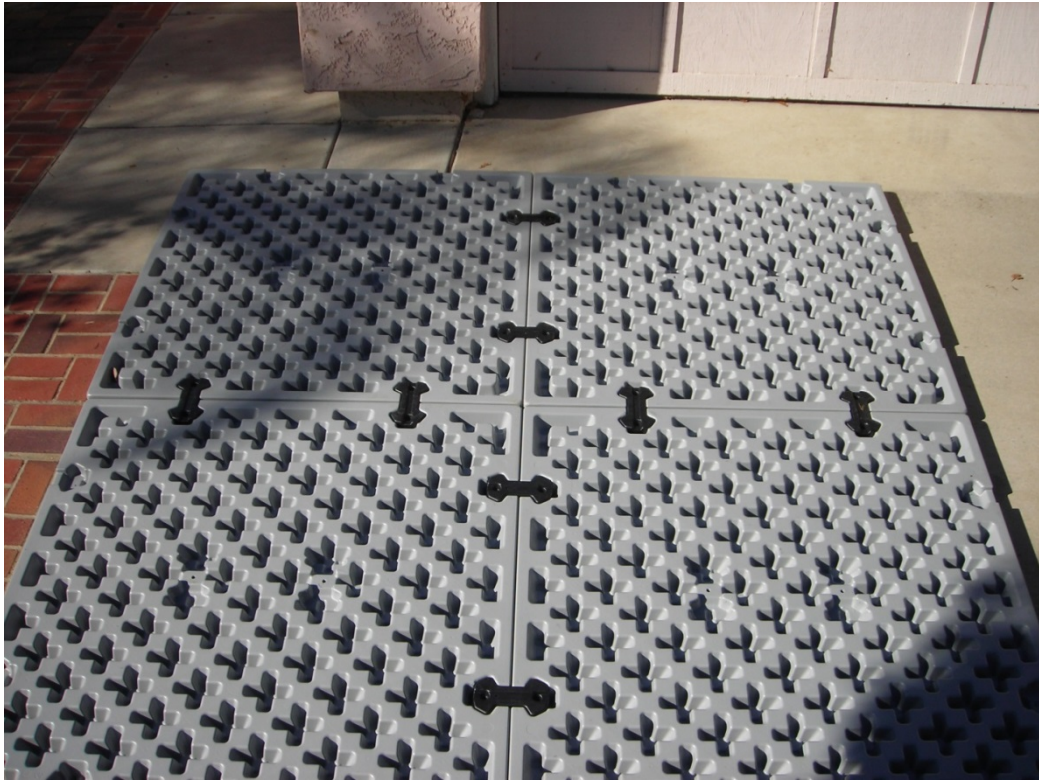
1. Line up modules bottom side up to make an 8' x 8' square.



2. Remove EZ Pad connectors from EZ Pad modules.



3. Locate the adjoining pockets on each module and insert connectors into adjoining pockets. Apply downward pressure to lock them in place.



4. Drive two screws into each of eight EZ Pad connectors.



5. Turn the EZ Pad over with at least 2 or more individuals. Place one person on each of 2 sides. Lift together standing it on end and slowly flip it over.



6. Move EZ Pad to spa installation location.



Conduit installation instructions (optional)

Using a 1" hole saw, drill from the bottom of the EZ Pad in the center of one of the recesses to simplify conduit insertion.



EZ Pad Surface Preparation

It's really easy to install your EZ Pads. EZ Pads can be put on any surface that is flat and level, and if your location is not perfectly flat and level it's easy to fix using 3/8" crushed rock or pea gravel, and possibly a 4" x 4" x 8' pressure treated board and a couple of stakes.

3/8" crushed rock is the preferred fill material because it is less likely than sand to shift, and allows for drainage.



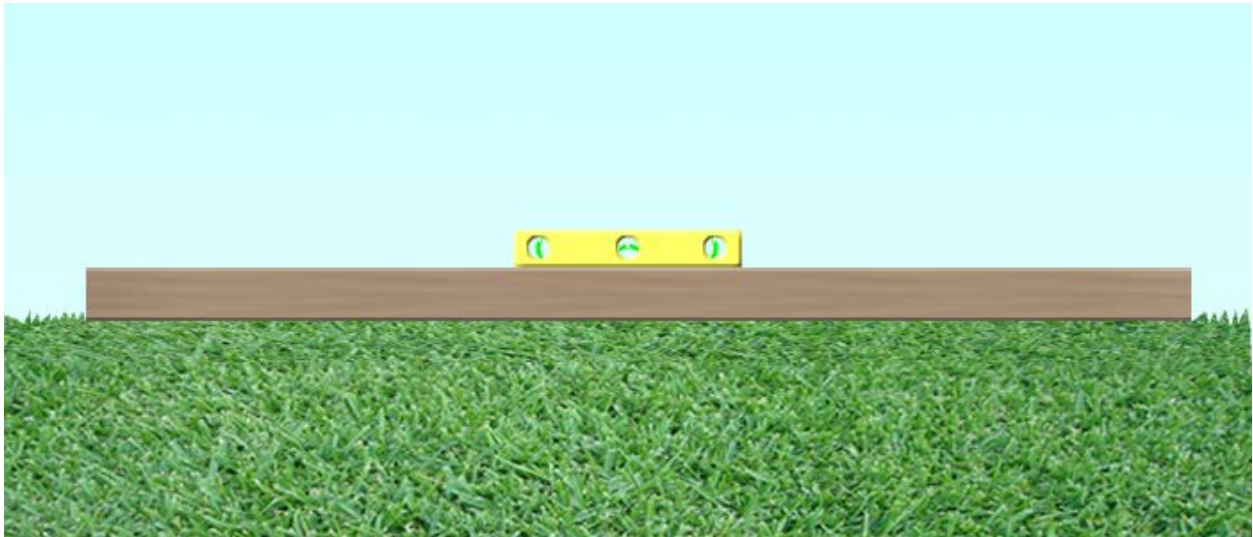
Use these simple recommendations to ensure the successful installation of your EZ Pad!

The EZ Pad modules can be placed on grass, dirt, sand or gravel. For best results, prepare a level base. Begin by checking and preparing, if needed, the installation location surface. Determine which method below is best suited to your installation, and refer to the diagram for proper surface preparation method.

Check the surface

The EZ Pad modules can be placed on grass, dirt, sand or gravel.

Use an 8 foot 2" x 4" and a bubble level to check that your installation location is flat and level. Be sure to check both directions, 90 degrees from each other.



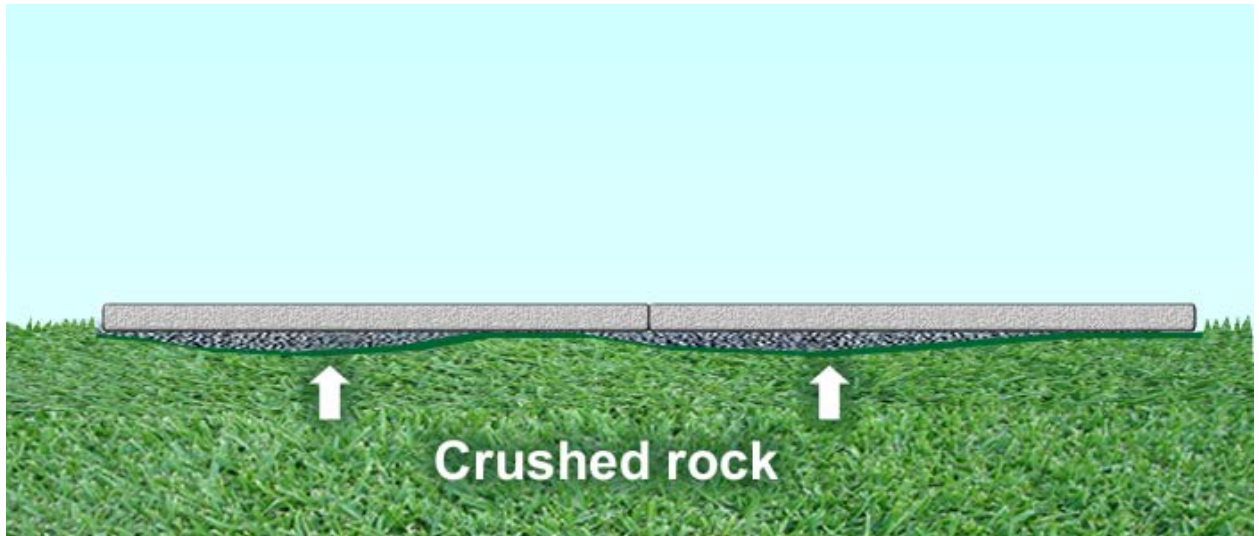
If you have a flat surface

If it is flat and level, you can put your EZ Pad right on top of grass, dirt, or other landscape material.



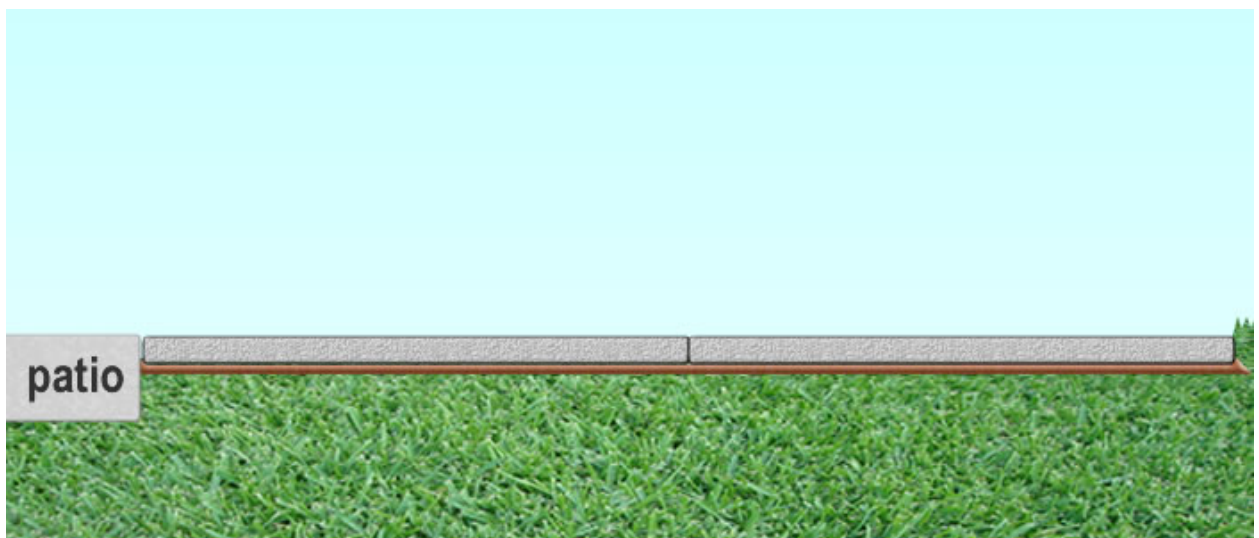
If there are slight depressions

If there are small depressions in the surface, use some 3/8" crushed rock to fill in the depressions.



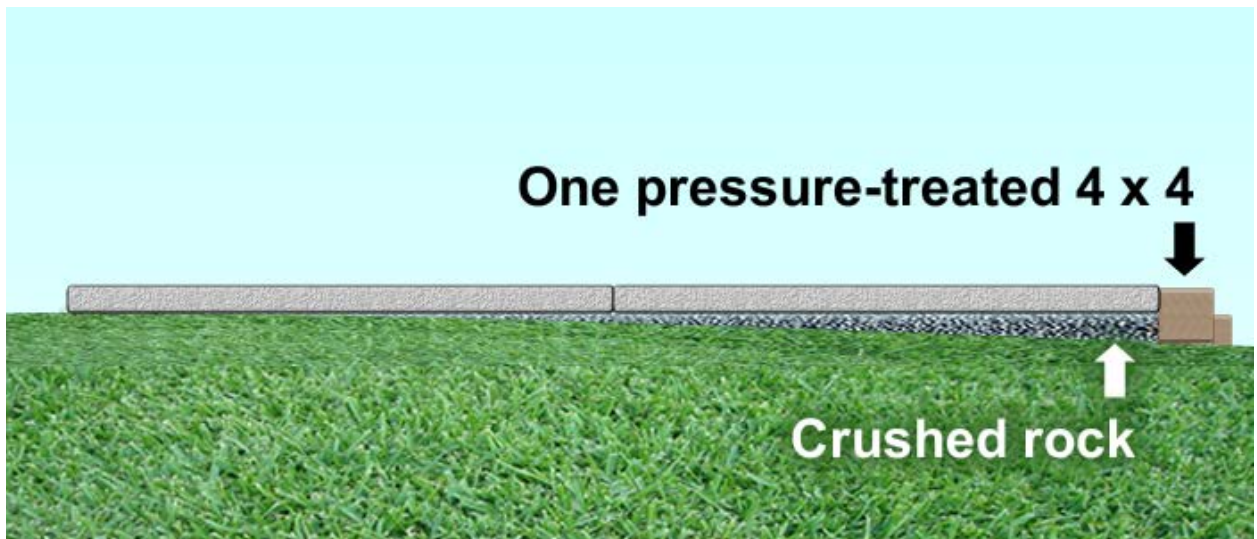
Make the EZ Pad level with ground or patio

You can also dig down 2" to make the EZ Pad level with the ground. This is a good idea if you want your hot tub or spa to be the same level as a patio or other ground surface.



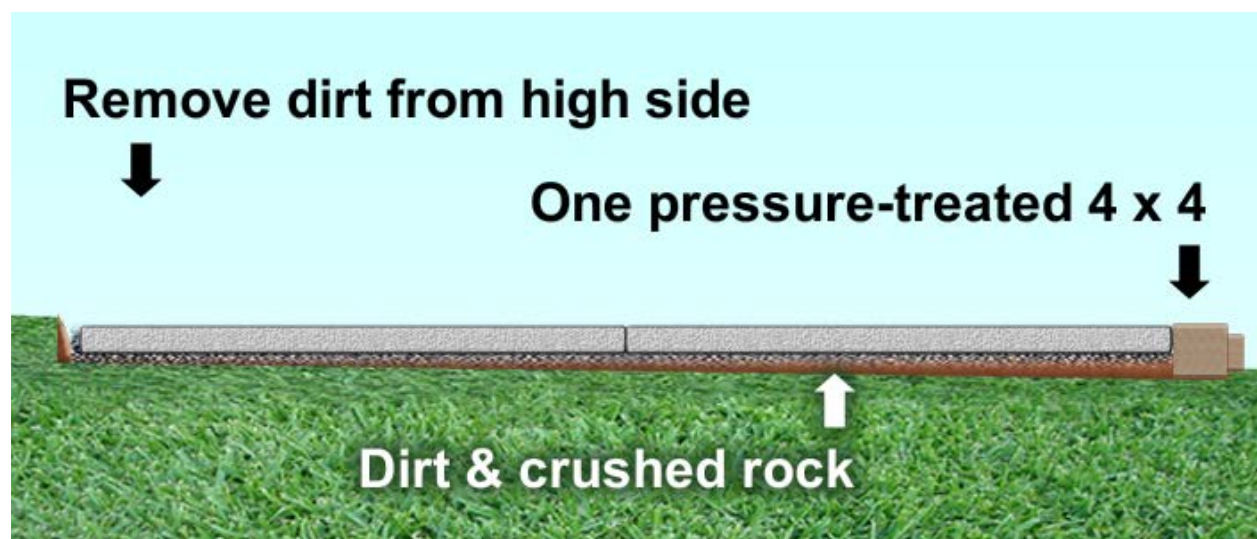
If there is a slight slope

If there is a slight slope, a pressure treated 4" x 4" can be used to create a simple gravel stop, and a few bags of crushed rock to make it level. A couple of stakes driven into the ground behind the 4" x 4" will keep it from shifting. 5 cubic feet should be enough for a difference in height from the high side to the low side of about two inches. Typical bags of gravel are 80 lbs, and .8 cubic feet, or about 5 or 6 bags for 32 square feet, 2" deep. Remember to check that the surface is level before installing your EZ Pad.

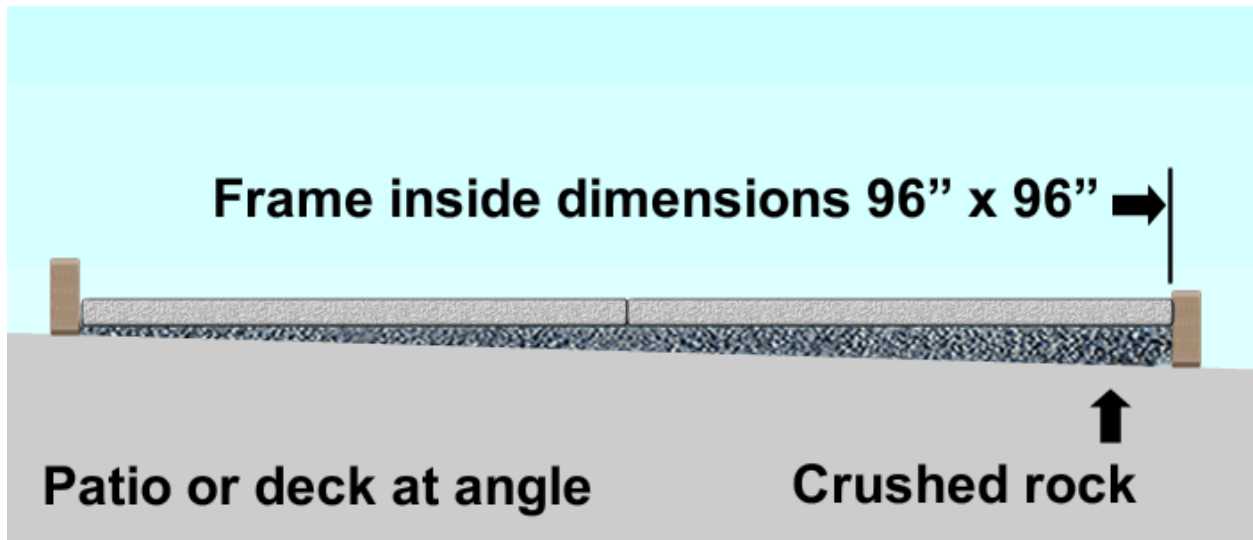


If there is a greater slope:

If there is more of a slope, a pressure treated 4" x 4" can be used to create a simple dirt/gravel stop, and dirt can be moved from the higher side to make it level. A couple of stakes driven into the ground behind the 4" x 4" will keep it from shifting. Remember to check that the surface is level before installing your EZ Pad.



On a Non-Level Patio



If you have a concrete or paver patio with a slope greater than 1" over 8', a frame with gravel and EZ Pads can be used to create a level platform for your hot tub or spa. You will need to purchase 10' lengths of 2x4 or 2x6 (depending upon how much slope there is) since 8' is not long enough to make a frame with inside dimensions of 96" x 96" (8'x8').

NOTE!

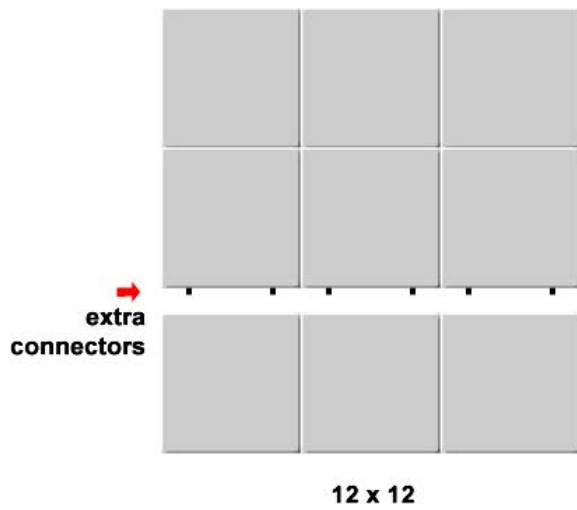
Lumber labeled 2" is typically actually finished to 1.5 inches, so two boards should be 96.5" and two 99.5" to make a frame that will fit an EZ Pad inside. (The extra .5 inch is to make sure the fit is not too tight)

2 3" deck screws can be used to assemble the ends. A 3/16" drill bit should be used to pilot the holes for the deck screws to ensure the boards do not split when the screws are put in.

For further assistance, call us toll-free at: 866-397-2370, 9:00 a.m. to 4:00 p.m., PST.

Larger Sizes

You can order two EZ Pads sets and additional connectors to make larger sizes. To easily assemble larger areas, assemble groups of panels no larger than 6 panels or 8' x 12'. Screw in additional connectors on the side that you wish to connect to the additional area.



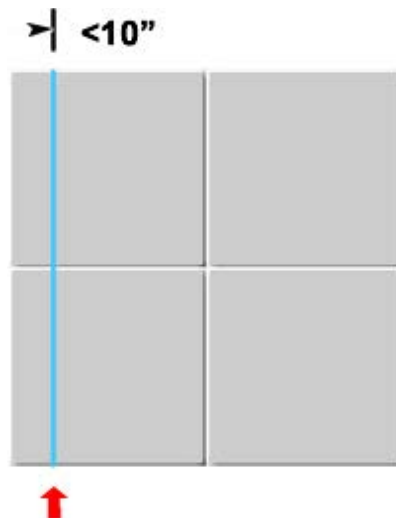
Extra connector

Once the sets of panels are assembled, turn over and place the group without connectors on top of the attached connectors and press down to snap together. It is a good idea to have three people when turning over the assemblies.

This method is good for all larger assemblies.

Cutting EZ Pads

It is OK to cut one dimension (edge) of an EZ Pad assembly. We recommend using a small hand-held circular saw with a fine blade. Set the depth of the blade to just over 2". To mark your cut, you can use a snap (chalk) line or straight edge. Do not cut more than 10" from the edge. Cutting beyond 10" means losing a connection point resulting in less stability. Polyurethane foam can be used to seal the cut edge if desired.



chalk line

EZ Pads can also be notched to fit under decks. Remember not to cut beyond 10" from the edge. EZ Pads are not suitable for attaching gazebos. Gazebos need to be attached to hot tubs or put on separate footings.

If you have any questions, feel free to give us a call at 866-397-2370, M-F, 9 a.m. to 4 p.m. Pacific Time